

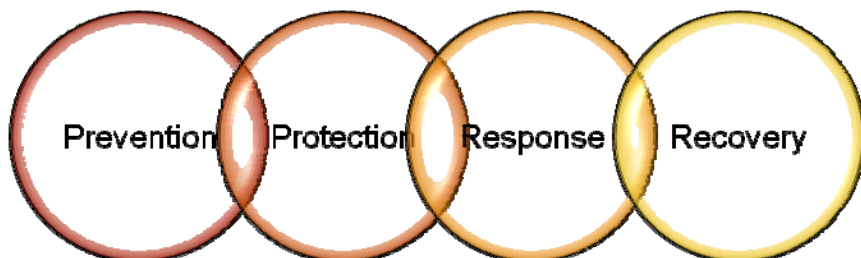
World  
**RESPONSE CONFERENCE**  
on  
**Global Outbreak - 2009 H1N1 + H5N1 Flu**

12 -13 November 2009  
Las Vegas, Nevada

**Key discussions will include:**

- **Balancing Leadership, Authority, & Accountability on Influenza Pandemic**
- **Assignment of Military, Courts, & Information Technology on PanFlu**
- **Status update of the 17 critical Infrastructure Councils**
- **2009 H1N1 flu guidance on current Investors, Policies & Regulations**
- **Peer networking of Government, Suppliers, and Contractors**

Raise your citizen's consciousness on



**Protect Your Community**

**From Possible Co-Occurrence of H5N1 AvianFlu during H1N1 SwineFLu, in the same area.**

## Support

- Urgent Endeavors of Global Public Health

## Communicate & Join

- The Medical & Scientific Community, Business & Consumers

## Build & Continue to Plan on

- Crisis Prevention & Response Management Plan

World Response Conference on Global Outbreak is the first practical conference to highlight the first real-time test on global and domestic preparedness in the aspect of prevention, protection, response, and recovery.

The global and national critical infrastructure is threatened by the latest WHO declaration of Pandemic Level Alert Phase 6. WRCGO 2009 is a spearhead of convergence to address the leadership roles and responsibilities for an influenza pandemic, to test and exercise the mechanism of coordination, to strengthen the performance monitoring and accountability, between federal, state, and local governments and the private sector in preparing and responding for a pandemic. At the conference, the attendees will gain confidence in managing the risk not only to their own community's health but also to the equity markets and global economy.

Government leaders, critical infrastructure councils, first responders, medical & scientific experts, military, justice & law experts, information technology guru, media, and recognized world leaders on public health will speak in this conference.

### Who should attend

- **Government Representatives Worldwide**
- **Associations**
- **Administration & CFO**
- **VP and Management for Emergency Services**
- **Critical Infrastructure and Pandemic Planning Committee Members**
- **Director of Operations & Maintenance**
- **Program Manager of Emergency**
- **Financial Affairs & University Controller**
- **Manager of Employee Wellness**
- **Corporate Relations Team**
- **Director for Health & Safety Services**
- **Crisis Management Coordinator and Engineer**
- **Human Resource**
- **Manager for Protection, Safety, & Environmental Services**
- **Information Technologies**
- **Manager Corporate Continuity & Recovery**
- **Law Enforcer/Courts**
- **Manager Situation Awareness**
- **Utility Services**
- **Risk Management Rep.**
- **Research Rep**
- **Student & Academic Services**
- **Public Information Rep.**
- **Health & Safety Rep.**
- **Agriculture & Food Safety**
- **Facilities Rep.**
- **Health /Medical/Hospital Professionals**

*Where the future of public health & global security will be decided:*

- 2 full days of content
- 30 of the highest calibre of speakers
- over 300-350 delegates
- one-on-one meeting & simulation exercise
- panel discussions of the critical infra councils

**Test** your existing pandemic response action plan and **refine** them here at **WRCGO 2009!**

WRCGO 2009

## Program Agenda

### 12 November 2009 • Thursday (Day1)

- 0830 - 1500hrs** Registration for Media
- 0830 - 1500hrs** Registration for Speakers, Exhibitors & Delegates
- 0900- 0905hrs** Opening Remarks
- 0905- 0930hrs** Anatomy of H1N1
- Introduction of Quadruple Reassortant Virus
  - The Antigenic Shift Process
  - How SuperFlu is Born
- 0930- 0945hrs** Historical Perspective from 1918 through the Present
- 0945- 1015hrs** H1N1+ H5N1 Flu Guidance: Investors
- Exacerbation of Worldwide Recession by H1N1 & H5N1 virus
  - Bringing Business Continuity Planning to Reality
  - Crisis Management Task Force Today
- 1015 - 1045hrs** Refreshment Break
- 1045 - 1115hrs** WHO Eyed for H1N1 Flu Control
- WHO Roles during Rapid Response & Containment
  - Mobilization & Dispatching of Resources for WHO Worldwide Operations
  - WHO, our Lead for H1N1 & H5N1
- 1115 - 1200hrs** On Call for the Next Patient Zero
- Partnership of Lead State Public Health & Homeland Security
  - US National Guard, Executing the Nation's Response to H1N1+H5N1
  - Panel Discussion: Fire Dept, Public Health, Homeland, Law Enforcers
- 1200 - 1300hrs** Group Luncheon
- 1300 - 1315hrs** Modern Public Health Responses: Vaccine & Drug Development and Safety Distribution Protocol
- A Pharmaceutical Approach: Mitigating impact of influenza pandemic
  - Increased supply of pandemic vaccine
  - Vaccine distribution based on priority groups
- 1315 - 1330hrs** Hospitals: Preparation for Surge Capacity
- Strategic use of antivirals for patients
  - Healthcare personnel recruitment and training for adequate staffing during emergency
  - Stockpiling of medical supplies and consumable resources, contingency plan
  - Continuation of essential medical services

12-13 November 2009 • Las Vegas, Nevada

▶▶ WRCGO 2009 will feature **case studies** of the possible impact of H1N1 strain and H5N1 strain in the same area.

- ▶▶ **Panel Discussions** of Courts, First Responders, Critical Infra Councils
- ▶▶ **Sponsors & Exhibitors Meet Delegates**

### 12 November 2009 • Thursday (Day1)

- 1330 - 1345hrs** Military Role on Pandemic Influenza
- DoD's First Priority
  - Role on refugees and displaced populations
  - Lesson Learned from the Spanish Flu
- 1345 - 1415hrs** Overview: International Law (Courts) & Global Outbreak
- Liability Issues during state of emergency
  - Civil Rights Issues during Pandemic
  - Legal Issues on Pharmaceuticals Deployment Assistance
- 1415 - 1445hrs** Human Surveillance of H1N1 & H5N1 Flu
- Global Surveillance during Pandemic
  - Epidemiologic and Laboratory Investigations
  - Enhancing US Human Influenza Surveillance
  - Mortality Surveillance & Outbreak Detection
- 1445 - 1515hrs** Agricultural Surveillance of Influenza o fH1N1 & H5N1 Flu
- Early Detection and Investigation
  - Monitoring Hogs and possible host of H1N1 virus
  - Differentiation of methods of surveillance between AIV and SIV
- 1515 - 1545hrs** Refreshment Break
- 1545 - 1600hrs** Surveillance of Influenza-like Illness in Establishments and Tourist Spots
- Innovative Approved Technology for Early Detection of Influenza Virus with Pandemic Potential
  - Hospitality Industry's Approach
- 1515 - 1700hrs** Networking – Cocktails Sponsors & Exhibitors Meet Delegates

**Register 3 people, the 4th registrant is FREE!!!**

# World Response Conference on Global Outbreak – 2009 H1N1+H5N1 Flu

13 November 2009 • Friday (Day2)

- 0830 - 1500hrs Registration for Media  
0830 - 1500hrs Registration for Speakers, Exhibitors & Delegates  
0900 - 0905hrs Opening Remarks  
0905 - 0945hrs Country Reports on H1N1 & H5N1 Influenza
- Spotlight in country neighbor's situation update
  - Report on Winning and Losing Industries
  - On Focus: Security & Safety Issues Impacting Regional and Worldwide Travel
- 0945 - 1030hrs Protecting Animal & Human Health Population
- Role of Diagnostics on Swine (SIV) and Avian Influenza Virus(AIV)
  - Biosecurity Standard Promotions on Swine and Avian producers
  - Vaccination Policies for Swine Influenza
  - FAO's Position on Food Safety
- 1030 - 1100hrs Refreshment Break  
1100 - 1130hrs Border and Airport Control Measures
- Methods for Rapid Screening and Clinical Assessment on SIV and AIV
  - Quarantine Issues for possible occurrence of H1N1 and H5N1 Influenza
  - Aviation Transport Security Act
  - Personal Protection for Border Workers
- 1130 - 1200hrs AntiViral Drugs, The Drug Therapy
- The Next Generation Antiviral Drugs
- 1200 - 1300hrs Group Luncheon  
1300 - 1315hrs Critical Infrastructure (CI) in Times of Pandemic
- Relevance to the Mission of the First Responders
  - Assessment on Potential Loss of a Critical Infrastructure



Reserve your seat now by calling us at 425.996.7102 or go to <http://wrcgo.eve-ex.com/online-reservation>

**Understand the decision maker's needs firsthand and be able to demonstrate the value of your solutions on prevention, protection, response, recovery.**

For any inquiries, email us at [inquiry@eve-ex.us](mailto:inquiry@eve-ex.us) or call us at 425.996.7102.



12-13 November 2009 • Las Vegas, Nevada

▶▶▶ We value group learning. Multiple registrations from the same company receive this discounts:



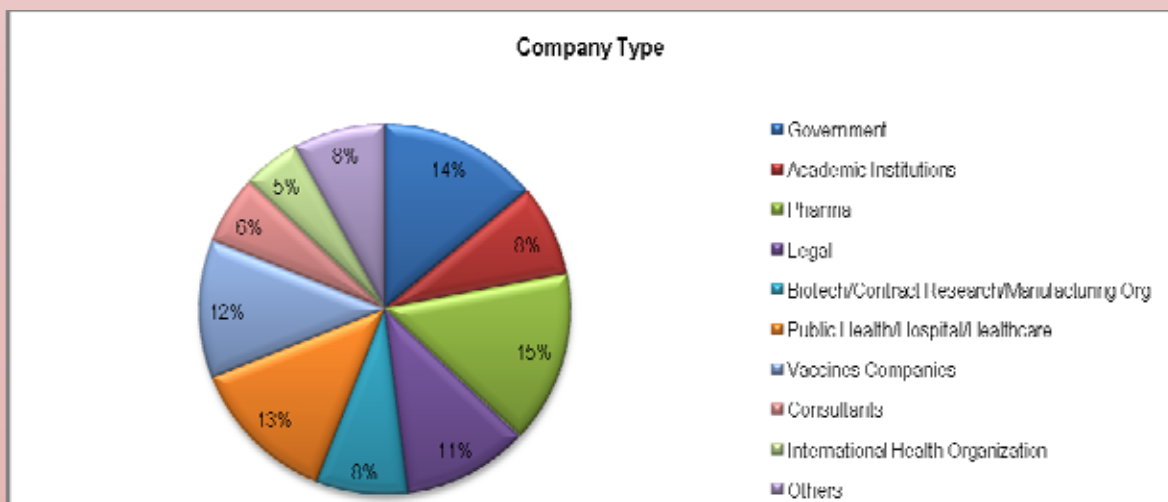
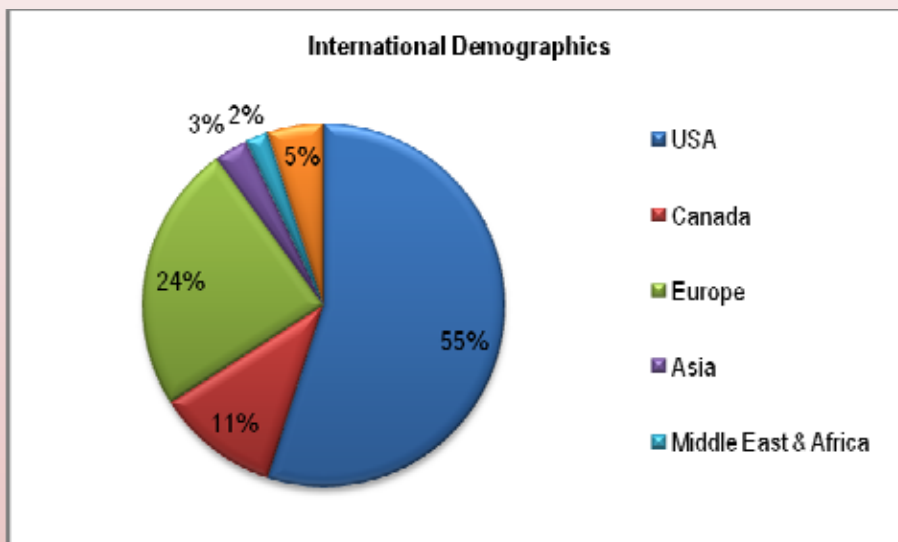
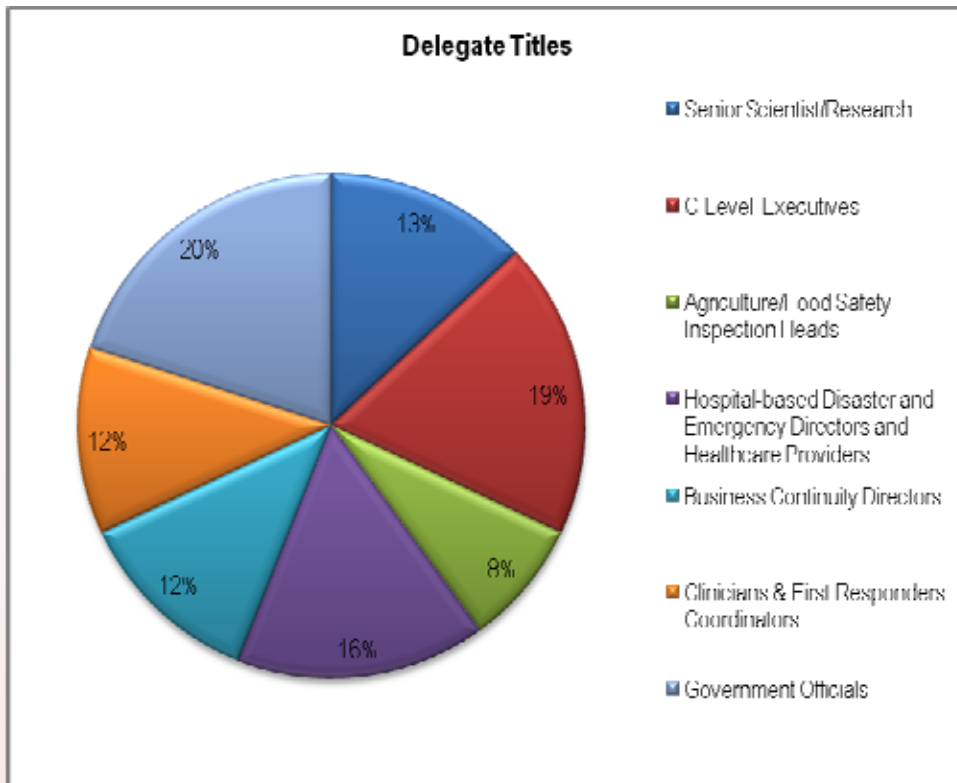
13 November 2009 • Friday (Day2)

- 1315 - 1330hrs US Schools & Universities: Blueprint On Crisis Management Plan & Response
- Education Activities and Priorities: Possible Co-Occurrence of 2009 H1N1 With Avian Flu
  - Worldwide School Pandemic Scenarios During H1N1 Outbreak
- 1330 - 1345hrs Human Resource Management During Pandemic Outbreak
- Prioritize job functions related to Critical Industries
  - International Regulations + Policies for Personnel during Pandemic
- 1345 - 1400hrs Global Outbreak: The New Face of Information Technology & Social Media
- How they take responsibility for Public Awareness
  - Managing the Impact of Information
  - New Technology to Deliver Prompt and Clear Reports
- 1400 - 1600hrs Test your Plan thru Simulation Exercise One-On-One Meetings  
1600hrs Closing Remarks & Conference Adjourns

A Pandemic Influenza outbreak would affect ALL areas of OPERATIONS.... **Test your existing pandemic response action plan** and refine them here...

- ▶ Simulation exercise
- One-On-One Meetings ◀
- ▶ Worldwide Renowned Speakers
- Case Studies ◀
- ▶ Panel Discussions

Register Today! Call 425.996. 7102 Fax: 425.968.7400 or visit [wrcgo.eve-ex.com](http://wrcgo.eve-ex.com)



# World Response Conference on Global Outbreak – 2009 H1N1+H5N1 Flu

Sales Contract

November 12-13, 2009  
Las Vegas, Nevada

Register and Pay in full not later than 18 August 2009 to qualify for the Super Early Bird Discount.  
Photocopy this form to register for multiple delegates.

**PLEASE REGISTER THE FOLLOWING & Fax to 425-968-7400**

## Delegate's Details

Full Name \_\_\_\_\_  
 Job Title \_\_\_\_\_  
 Name Preferred for Badge \_\_\_\_\_  
 Email \_\_\_\_\_ Fax \_\_\_\_\_  
 Tel Office \_\_\_\_\_ Mobile \_\_\_\_\_  
 Company \_\_\_\_\_  
 Department \_\_\_\_\_  
 Nature of Business \_\_\_\_\_  
 Website \_\_\_\_\_  
 Address \_\_\_\_\_  
 City, State \_\_\_\_\_  
 Zip Code \_\_\_\_\_ Country \_\_\_\_\_  
 Delegate's Signature \_\_\_\_\_ Date \_\_\_\_\_

If the Invoice is to be addressed for the attention of a different person than the delegate, please complete the details below:

Full Name \_\_\_\_\_  
 Email \_\_\_\_\_ Tel No \_\_\_\_\_

Registration Type	Super Early Bird Book & Pay by 18 <sup>th</sup> August	Early Bird Book & Pay by 18 <sup>th</sup> Sep	Standard
Conference Registration Business/Consumers	\$ 898	\$ 998	\$ 1,188
Government Public Health/Academia	\$ 798	\$ 798	\$ 998
Non-Profit Org/Association	\$ 798	\$ 798	\$ 998

I'm sorry I cannot attend, but please send me the conference documentation at \$ 300.00.  
 (Please add \$50 for international shipping).  
 Note: Registration Fee is inclusive of 2-day event registration, lunch, refreshment break, & cocktail.

## Payment Method

Please debit my credit card:

Visa  Master Card  AMEX  Discover Security Code \_\_\_\_\_

Visa and MC cards have a 3 digit code on the signature panel on the back of the card, following the account number. American Express cards have a 4 digit code on the front of the card, above the card number.

Card Number (16-Digit) \_\_\_\_\_

Expiry Date \_\_\_\_\_

Name Printed On Card \_\_\_\_\_

Signature \_\_\_\_\_

Billing Address \_\_\_\_\_

Billing Zip Code \_\_\_\_\_

Or enclosed is a check for \$ \_\_\_\_\_ to cover \_\_\_\_\_ persons.

Check here if you have any dietary or accessibility needs. We will contact you for more details.  
 Please Note: If you have not received an acknowledgement confirming your booking, please call us at 425.996.7102. Our EIN 27-0494399

## REGISTRATION CODE:

Your Registration Code Is **WRCGO-INQ**  
 Please Use This When Registering For The Conference

## 5 Ways to Register

Online: [www.wrcgo.eve-ex.com](http://www.wrcgo.eve-ex.com)

Email: [Inquiry@eve-ex.us](mailto:Inquiry@eve-ex.us)

Phone: 425.996.7102

Fax: 425.968.7400

Post: 1776 I Street, NW

Washington, DC

20006 USA

## Group Registration

We value group learning. Multiple registrations from the same company receive this discounts:

► **Register 3, Send 4<sup>th</sup> Free!** (applicable to all duration before event)

► 10% discount for 5 or more

► 15% discount for 8 or more

**\*Discounts 10% & 15% is exclusive of early bird discounts.**

## Cancellation, Postponement, and Substitution Policy

### CANCELLATION AND SUBSTITUTION POLICY

Provided the fee has been paid in full, substitutions at no extra charge can be made up to 7 business days before the start of the conference. Cancellations must be received in writing or by fax to +425-968-7400, more than 7 days before the conference is to be held in order to obtain a full credit for any future conference. Cancellations received 7 days or less (including the seventh day) prior to the conference will not be credited. In the event that Events & Exhibitions cancels an event, payments received at the cancellation date will be credited towards attendance at a future conference, or in the event of postponement by Events & Exhibitions, a rescheduled date. Events & Exhibitions reserves the right to postpone or cancel an event, to change the location of an event or to alter the advertised speakers for an event. Events & Exhibitions is not responsible for any loss or damage as a result of substitution, alteration, postponement, or cancellation of an event due to causes beyond its control including without limitation, acts of God, natural disasters, sabotage, accident, trade or industrial disputes, terrorism, or hostilities.

**SPEAKER CHANGES** Occasionally it is necessary for reasons beyond our control to alter the content and timing of the programme or the identity of the speakers.

**DATA PROTECTION** Your details may be passed to other companies who wish to communicate with you offers related to your business activities. If you do not wish to receive these offers, please tick the box below.

Please do not pass my information to any third party

## Payment Terms

Payment is due in full upon completion and return of the registration form. Due to limited conference space we advise early registration and payment by credit card to avoid disappointment. Your registration will not be confirmed until payment is received. Admission to the conference will be refused if payment has not been received.

Produced by:

**Events and Exhibitions**  
 1776 I Street, NW 9th/F  
 Washington, DC  
 20006 USA

